

## "Just a Fat Quarter Bag"

**You will need:** 18" x 22" of fabric (a fat quarter)  
 24" of ribbon or cord for drawstring  
 basic sewing supplies

### Instructions:

1. With wrong side of fabric facing up, measure and fold 1/2" hem from one of the 18" edges and stitch down.

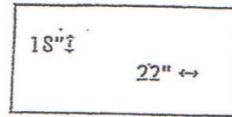


Diagram #1

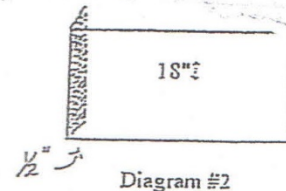


Diagram #2

2. Fold the fabric right sides together along the 22" edge. Starting 3/4" from the turned under top edge, sew 22" edges together, backstitch at start of seam. Press seam open.

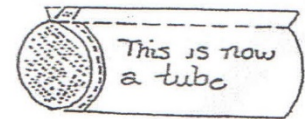
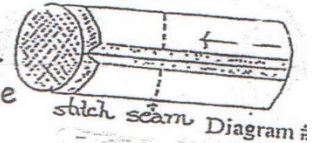


Diagram #3

3. Position the tube so that the seam is in the center. Fold the bottom edge up to meet the lower edge of the hem. Press. Stitch on the press line. Fold the lower half of the tube up to the upper half so that the seam now becomes the bottom of the bag.



4. Fold the hemmed edge down to cover the raw edge that is folded up. Overlap 1/2" and pin.

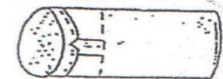


Diagram #5

5. Starting at the seam, topstitch pressed edge over raw edge. Stitch another row 1/2" up from first row of stitching.

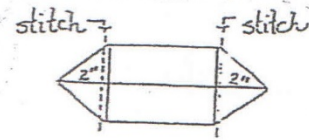


Diagram #6

6. To make the bottom of the bag square, turn bag inside out. Form a triangle on each side, measure a line 2" from the point and sew a line on each side.

7. Tack points down and turn right side out.

8. Thread cord through casing. Decorate ends with a special knot or button.

□ = wrong side      ▨ = right side

$$\begin{array}{r} 72 \\ 18 \\ \hline 7 \overline{) 90} \phantom{0} 13 \\ \underline{49} \phantom{0} \\ 41 \phantom{0} \\ \underline{35} \phantom{0} \\ 60 \\ \underline{54} \\ 60 \\ \underline{54} \\ 6 \end{array}$$